

Chichen Itza Ruins

Guide leads the way, Chichen Itza's secrets shown, So much to learn here.

[view map](#)



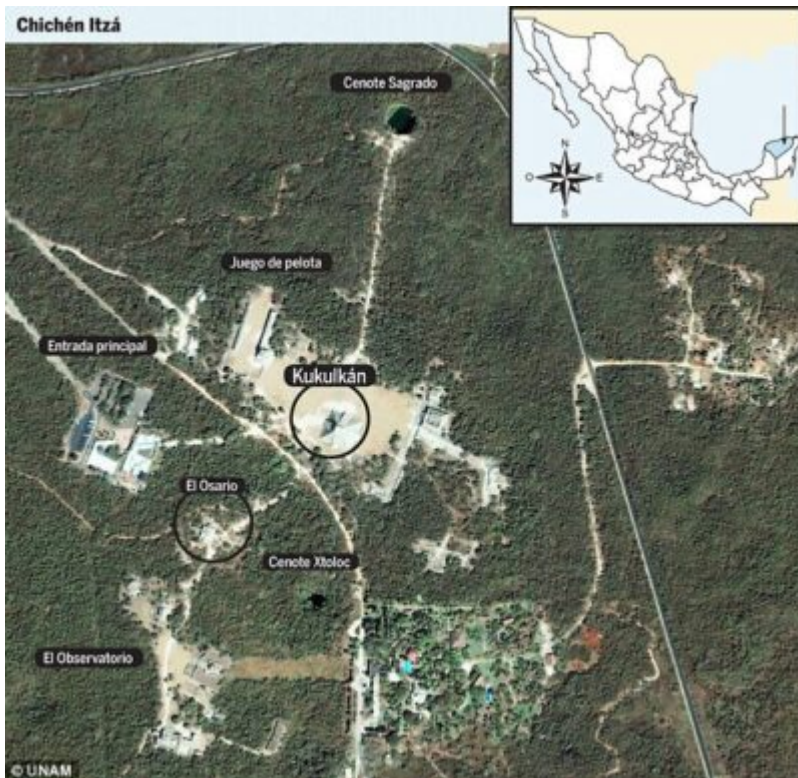
Top Tourist Destination in Mexico

[Tour of Chichen Itza](#)

Chichen Itza was an ancient Maya city located in the Yucatán Peninsula of Mexico. It was one of the largest Maya cities and served as a major regional power for centuries. The city is home to several well-preserved archaeological sites, including the Temple of Kukulcan, the Temple of the Warriors, and the Great Ball Court. The site has been recognized by UNESCO as a World Heritage Site and is one of the most visited tourist attractions in Mexico.

At its peak, Chichen Itza is estimated to have had a population of around 25,000 people. The city was one of the most important Maya cities in the region and had a large

population before it was abandoned in the late 1100s.



Map Of Site

Important sites at Chichen Itza include:

1. The Kukulcán Temple Pyramid: This is the most famous structure at Chichen Itza and is believed to have been built in the late 1100s. It is a Mesoamerican step pyramid and is noted for its feathered serpent design.
2. The Temple of the Warriors: The Temple of the Warriors is a large temple complex located in the center of the site and is notable for its intricate relief carvings of warriors and gods.
3. El Castillo: El Castillo, or "The Castle," is a five-level stepped pyramid located on the northern side of the site. It is considered to be the most important structure at Chichen Itza and is a popular tourist attraction.
4. The Great Ball Court: The Great Ball Court is a large playing field located on the northern side of the site. It is the largest of its kind and is believed to have been used for

a game similar to basketball or soccer.

5. The Sacred Cenote: The Sacred Cenote is a large natural sinkhole located on the site and was used for religious ceremonies and sacrifices.